

Water Purifier (RO+Ion-exchange)

WE200

Treatment process Ion-exchange

Purified Water Deionized water

Water quality Type 1 / A4



Type 1 (ASTM D 1193) / A4 (JIS K 0057) level purity benchtop water purifier

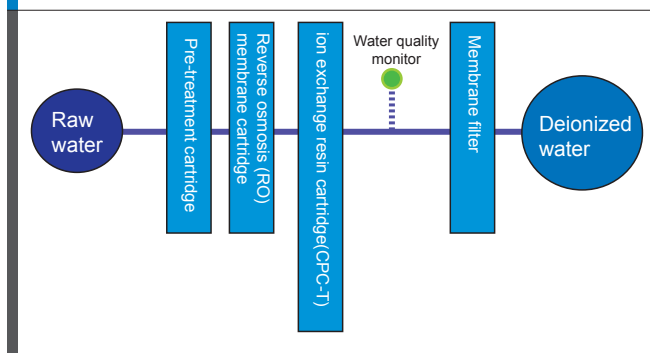
- Suitable for high sensitivity trace analysis
- Lower running cost
- By adopting reverse osmosis (RO) membrane cartridge set, life span of consumables has been expanded significantly
- Benchtop type, space saving
- Easy water sampling by attaching to water faucet
- Easy to operate digital display
- Displays replacement of consumables and its exchange history
- Standard equipped with membrane filter to protect pure water production from contamination
- Electromagnetic valve equipped at sampling water port for leakage prevention
- Universal power supply: works with 100-240VAC

Specifications

Model	WE200
Purified water	Deionized water: Compliant with ASTM D 1193 Type1 / JIS K0557 A4
Water purifying method	RO membrane→Ion exchange→filtration
Pure water delivery rate	0.5~1.0L/min continuous production
Raw water filter	Pre-treatment cartridge (activated charcoal + 0.1μm hollow fiber membrane)
Filtration	Reverse osmosis membrane RO
Ion-exchange resin cartridge	2L ion exchange resin containing activated charcoal (CPC-T)
Final filtration	0.1μm membrane filter
Leakage detection	Water supply solenoid valve forcibly shut off when leak is detected
Raw water press range	0.13~0.5MPa (1.3~5.0kgf/cm ²)
Raw water temperature range	10~30°C
Water sampling port	250mm above floor, RC1/4 (Connected with membrane filter)
Drainage port	ø10 rigid tube
Drainage rate	Maximum 2L/min.
Safety device	Water cut-off error, Water quality sensor error, Controller error, Pressure limit error, Leak error, Flow alarm/Error, Earth leakage circuit breaker
Power source (50/60Hz)	Single phase AC100~240V 1.3A or less
External dimensions (mm)	W350×D430×H 470
Weight	Approx. 30kg
Water quality display	7-segment LED display (Conductivity / Resistivity / Water temperature)
Other display	Consumables replacement display (Ion exchange resin, Pre-treatment cartridge, Reverse osmosis (RO) membrane, Membrane filter), Warning / Error display
Accessories	Supply / Drain water hoses, Pre-treatment cartridge, Reverse osmosis (RO) membrane cartridge set, Ion-exchange cartridge CPC-T, Membrane filter, Power cord, Seal tape

*This unit must be connected to drainage facility.

Treatment Process



Structure



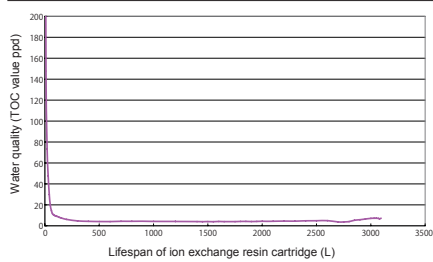
Water Quality Analysis

Item	ASTM D 1193 Standard Type 1	JIS K 0057 Standard A4	Measured value	ASTM D 1193 level	JIS K 0057 level
Electrical conductivity ($\mu\text{S}/\text{cm}$)	<0.056	<1	0.055	Type 1	A4
Organic carbon ($\mu\text{g}/\text{l}$)	<50	<50	5	Type 1	A4
Zinc ($\mu\text{g Zn}/\text{l}$)	-	<0.1	<0.1	-	A4
Silica ($\mu\text{g SiO}_2/\text{l}$)	<3	<2.5	0.5	Type 1	A4
Chloride ion ($\mu\text{ Cl}^-/\text{l}$)	<1	<1	<0.5	Type 1	A4
Sulfate ion ($\mu\text{g SO}_4^{2-}/\text{l}$)	-	<1	<1.0	-	A4
Total level				Type 1	A4

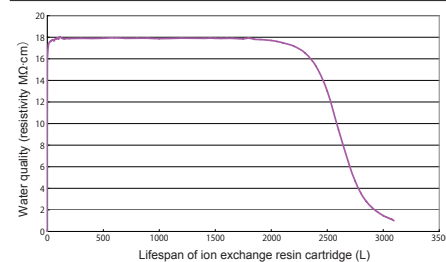
*Quality of raw water may cause different results.

*For water quality comparison JIS K 0057 ↔ ASTM D 1193 refer to page 115 of the general catalog.

■ Ion exchange resin lifespan test (TOC value)



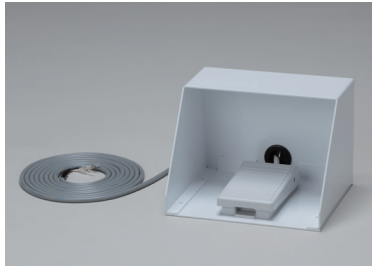
■ Ion exchange resin lifespan test (resistivity value)



■ Optional items



Water sampling stand



Foot switch

Product code	Product name
253266	Water sampling stand (supplied in connection kit) OWL40
253278	External alarm output terminal OWE10
253279	Remote water sampling terminal OWE12
253280	Foot switch OWE14
253686	Water supply port unit OWH10

■ Consumable parts



Pre-treatment cartridge



Reverse osmosis (RO) membrane cartridge set



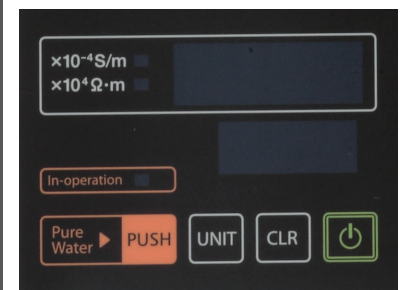
Ion-exchange resin cartridge CPC-T



Membrane filter

Product code	Product name
253099	Pre-treatment cartridge
253257	Reverse osmosis (RO) membrane cartridge set
253256	Ion-exchange resin cartridge CPC-T
9020010004	Membrane filter

Control Panel



Supply / Drain Port (Back of main unit)

